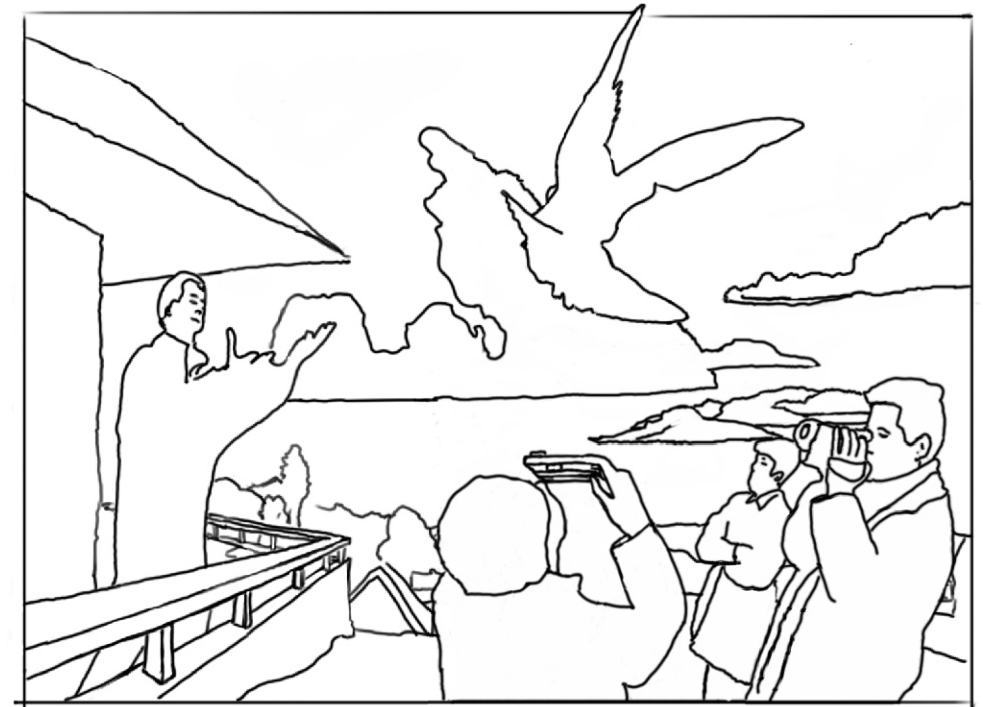


CPIP

Online References:

Bergen Linux Users Group: <http://www.blug.linux.no/rfc1149/>

Internet Engineering Task Force RFC 1149:
<http://www.ietf.org/rfc/rfc1149.txt?number=1149>



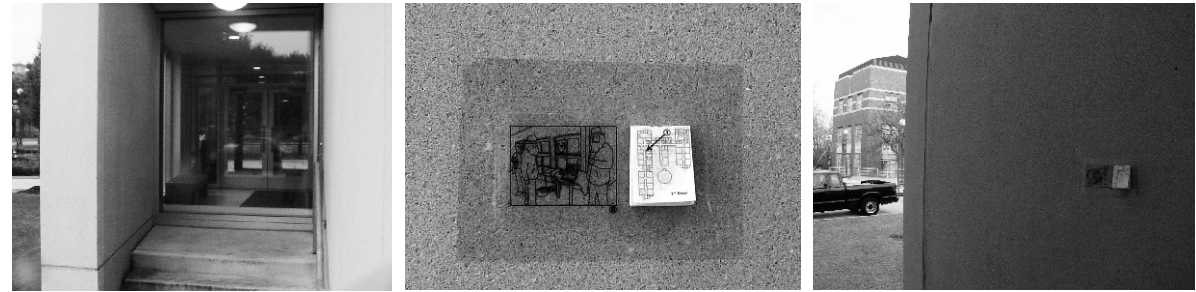
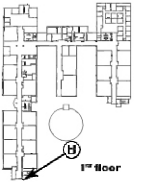
Created By Tommy Mintz in 2004 - 2005

tommy@ergocise.com

<http://ergocise.com/tc>

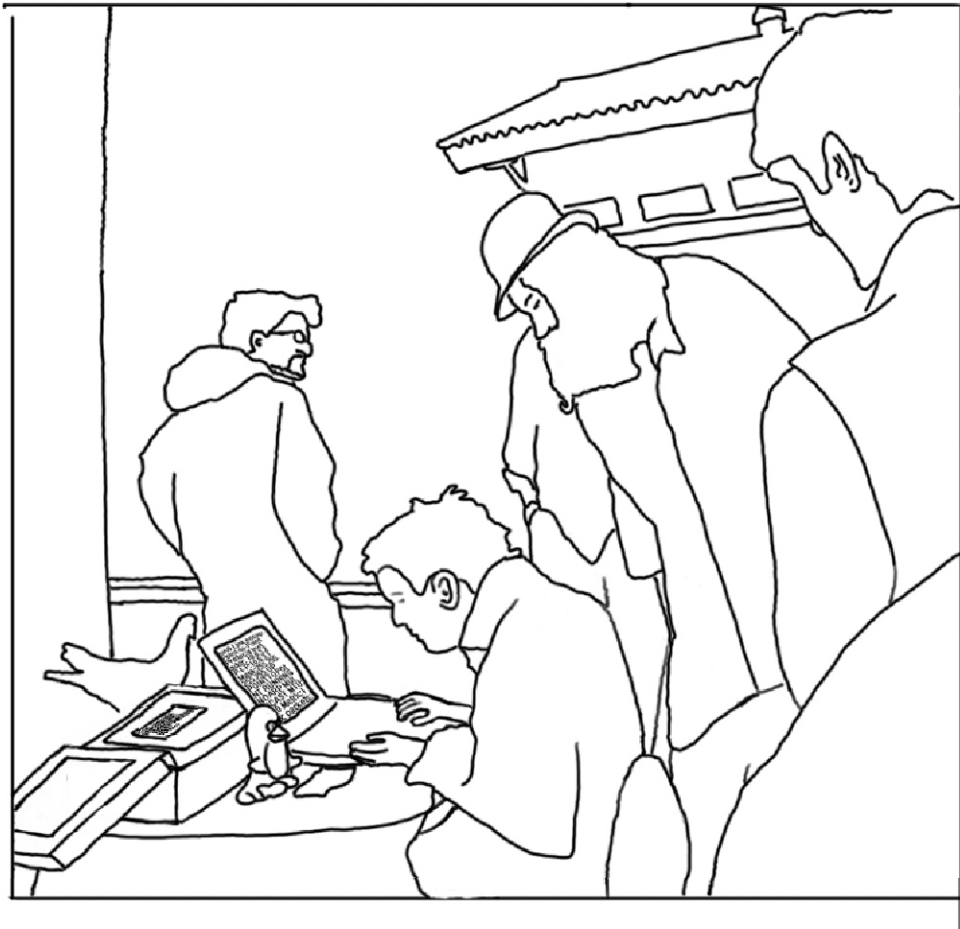
Panel **8** -

Located out doors on a concrete wall of a stair landing below which is a grassy area. This landing is visible through a large window at the end of the first floor hallway. To reach this panel, the viewer passes through a set of easily overlooked doors in the landing of the back stairs. If the second door is let go, it locks behind the viewer, necessitating walking around into the hallway that overlooks the landing.



Panel 7 -

Located on the second floor, in a seating area at the end of the long hallway. The panel is taped to the wall adjoining the windows facing east onto Klapper Hall. It is located above a trash can and in relation to some unused sockets.

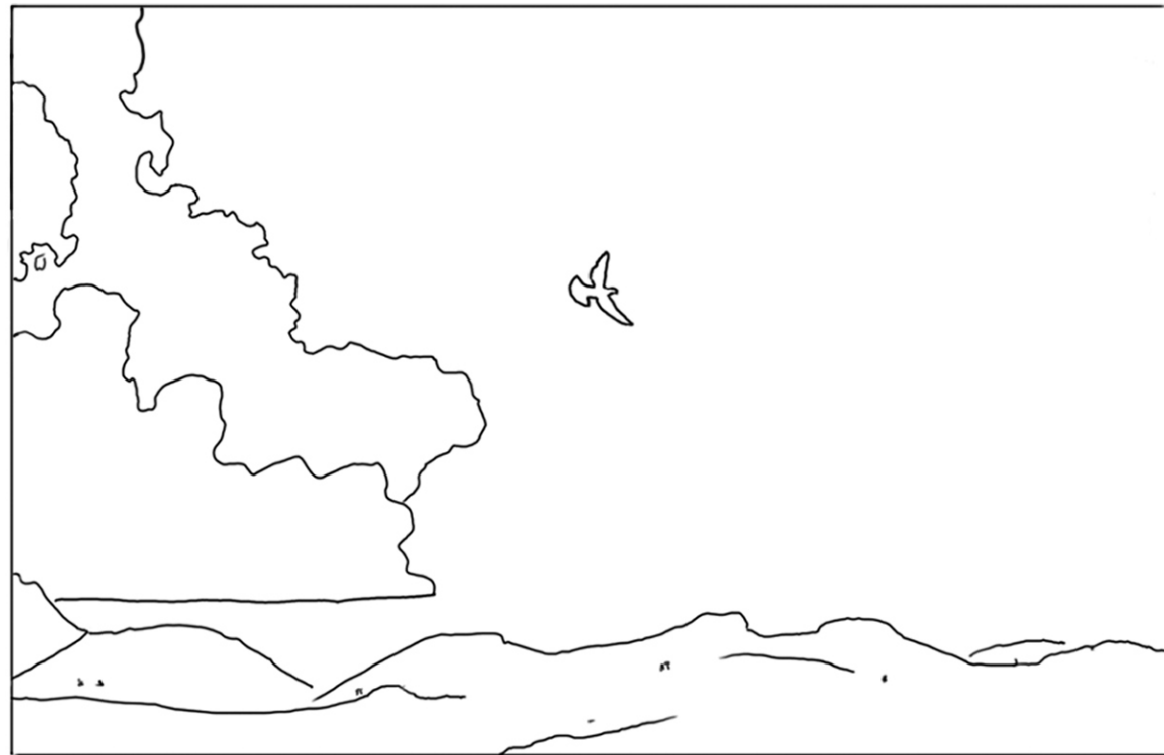
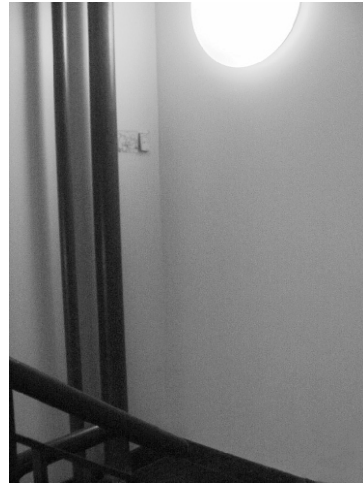
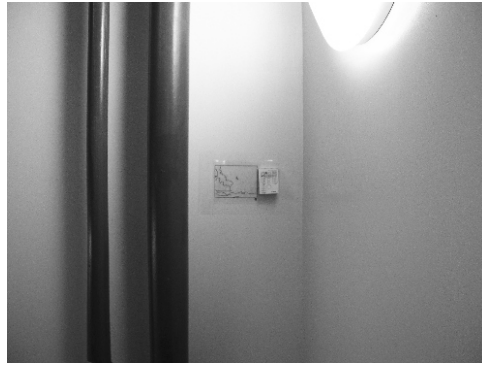
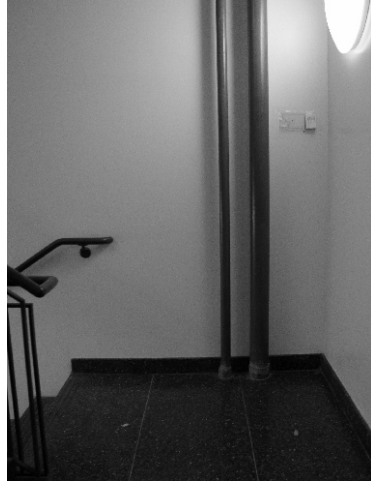
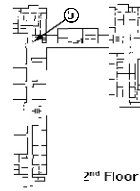


CPIP, "carrier pigeon internet protocol," which describes how to send internet data via a carrier pigeon, was written as a April fool's day joke in 1990. The protocol, originally called, "RFC1149;Standard for the Transmission of IP Datagrams Over Avian Carriers," was never intended for use. But in April 2001, the Bergen Linux Users group in cooperation with Vesta Brevdueforening implemented the protocol by sending a ping* using a carrier pigeon.

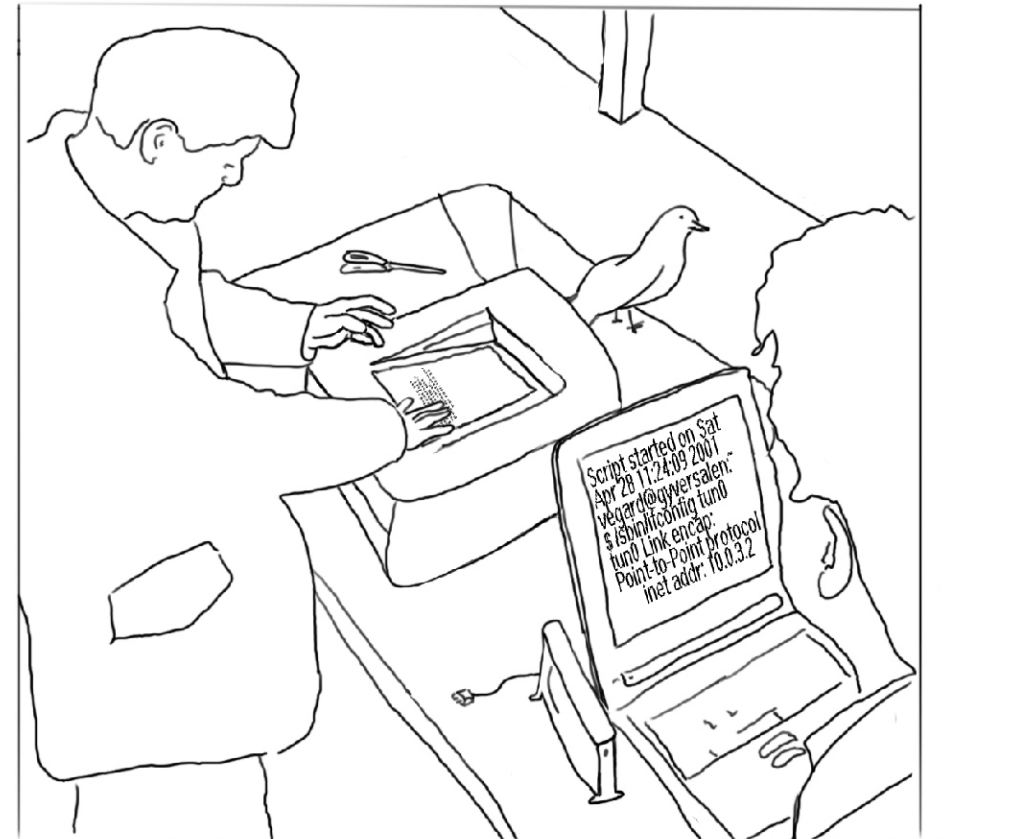
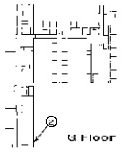
The installation in Powdermaker hall, **CPIP**, illustrates the story of the Bergen Linux Users Group implementing CP/IP.

* A "ping" is a message sent on computer networks (such as the internet) It provides a test of whether a particular computer is reachable.

Panel **5** -
On the 2nd floor landing of the main stairwell. The panel is placed next to red water pipes on the wall abutting where the light is mounted.

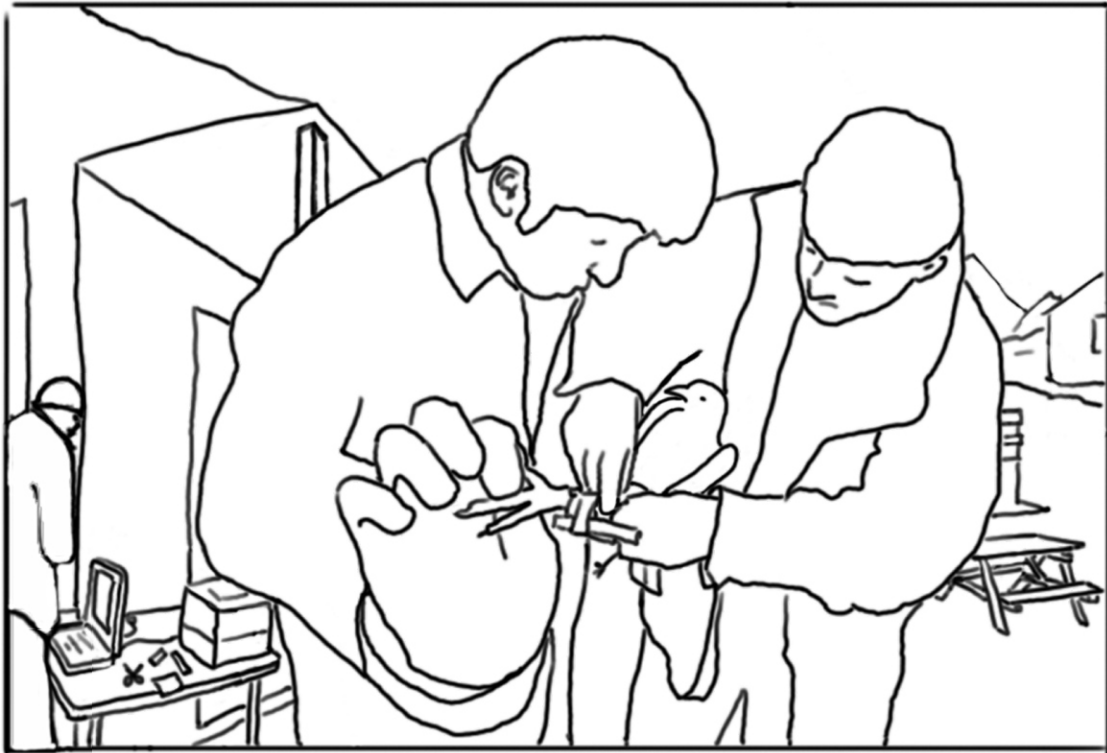
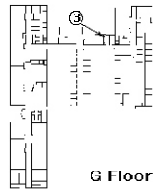


Panel **2** -
Halfway between the first and ground floors, in the back stairwell, at the end of the long hall. The panel is placed near a window that is nearly level with the ground.



Panel 3 -

On the ground floor. Placed in a corner of an unoccupied soda machine alcove, near a doorway facing the library. Around the panel are unused sockets, access to a utility shaft, a fire alarm, fire alarm switch, and fire alarm code poster.



Panel 4 -

On the second floor. Placed on window in the corridor overlooking the courtyards, Cambell Dome and Klapper Hall.

